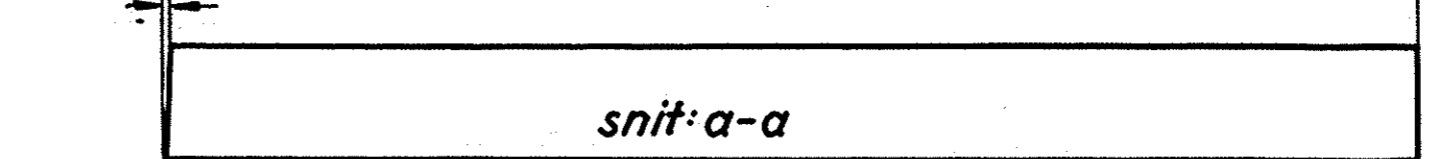
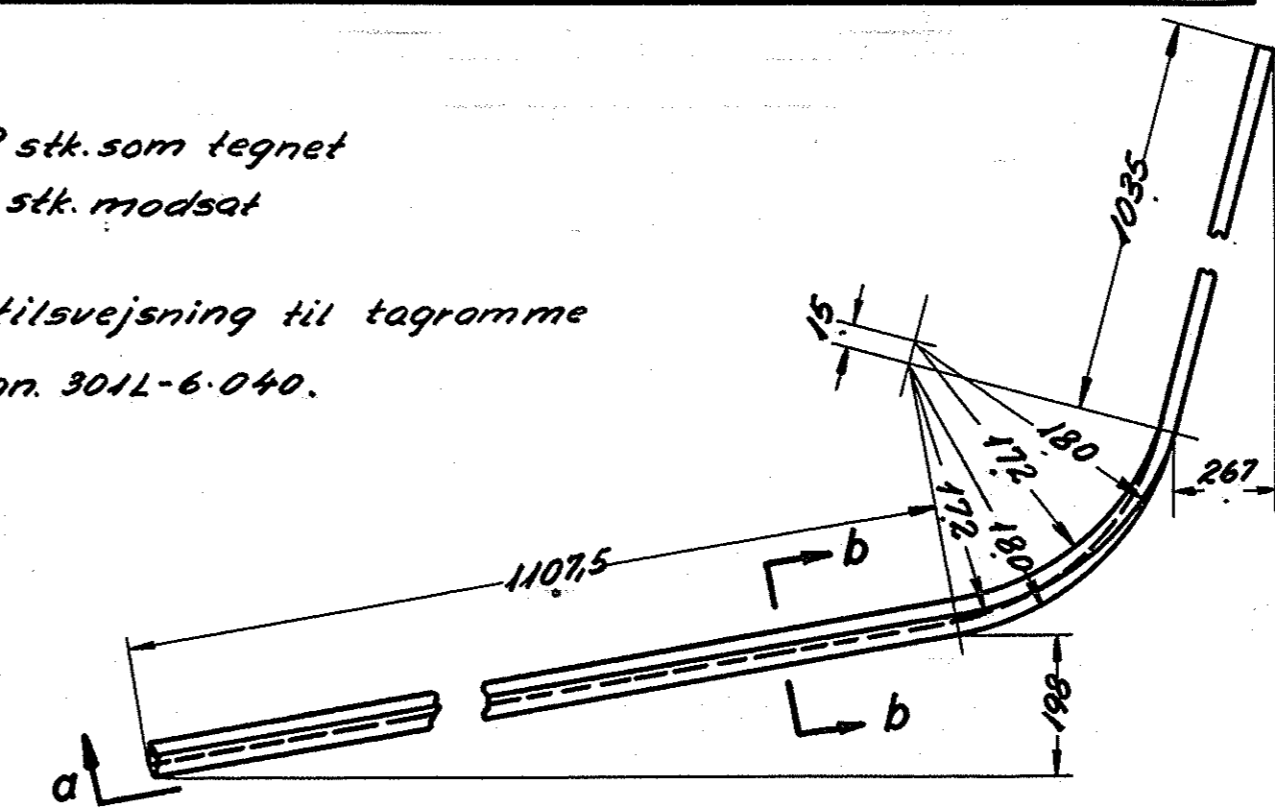


Betegnelse			
topramme			
Ant. i alt.	Pos. 1	Mat.	st. 37
Ordn.	Sktl. 9451	Tegn.	301L-6-040

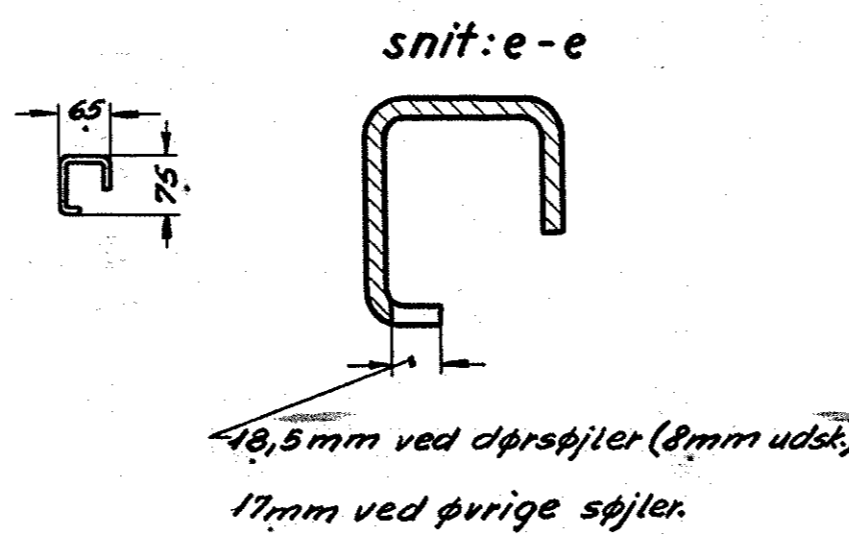
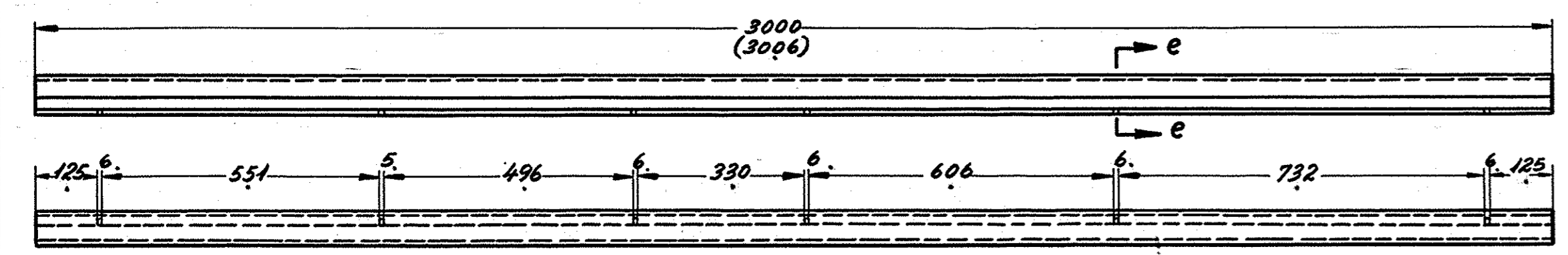


2 stk. som tegnet  
2 stk. modsat  
ang. tilsvejsning til tagramme  
se tegn. 301L-6-040.

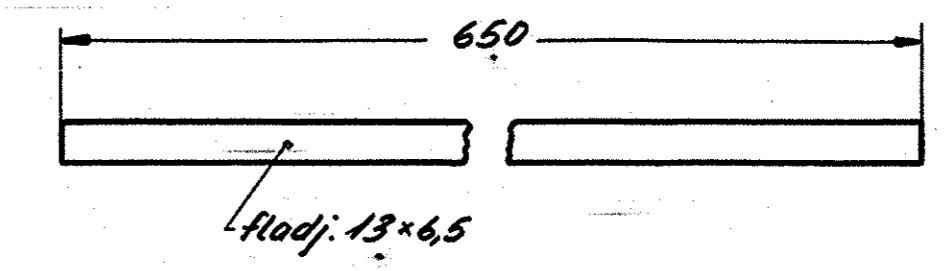
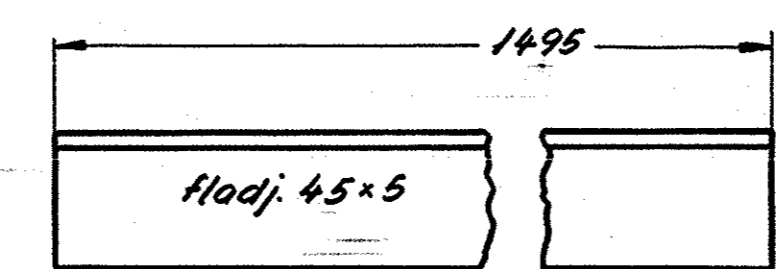


snit:b-b

Betegnelse			
topramme			
Ant. i alt.	Pos. 4	Mat.	st. 37
Ordn.	Sktl. 9451	Tegn.	301L-6-040

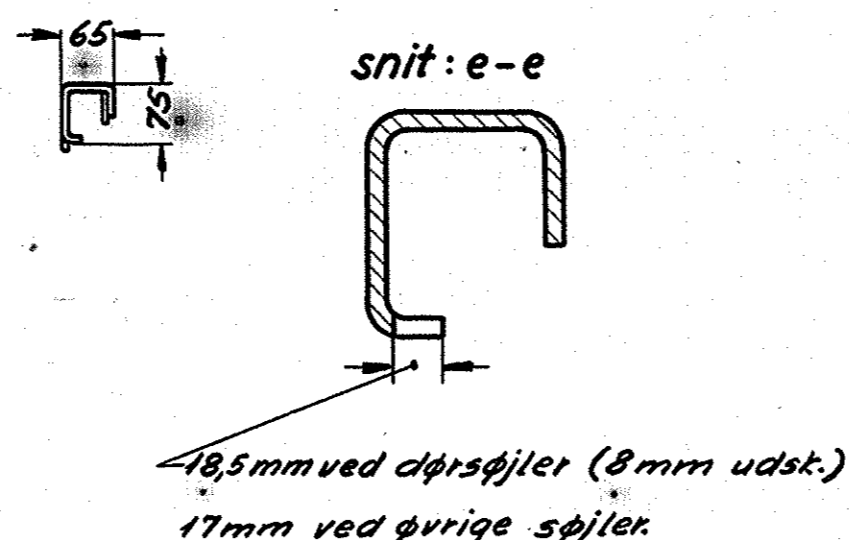
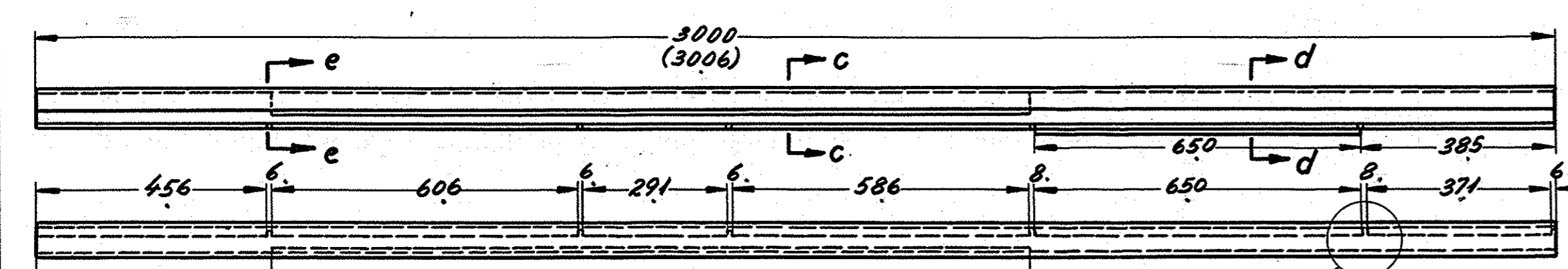


Betegnelse			
topramme			
Ant. i alt.	Pos. 2	Mat.	st. 37
Ordn.	Sktl. 9451	Tegn.	301L-6-040

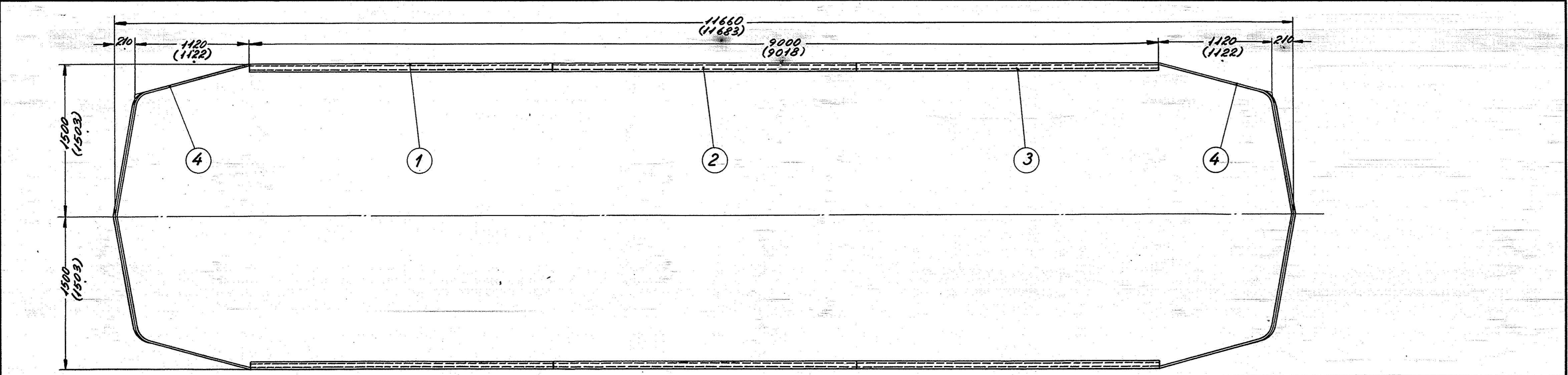
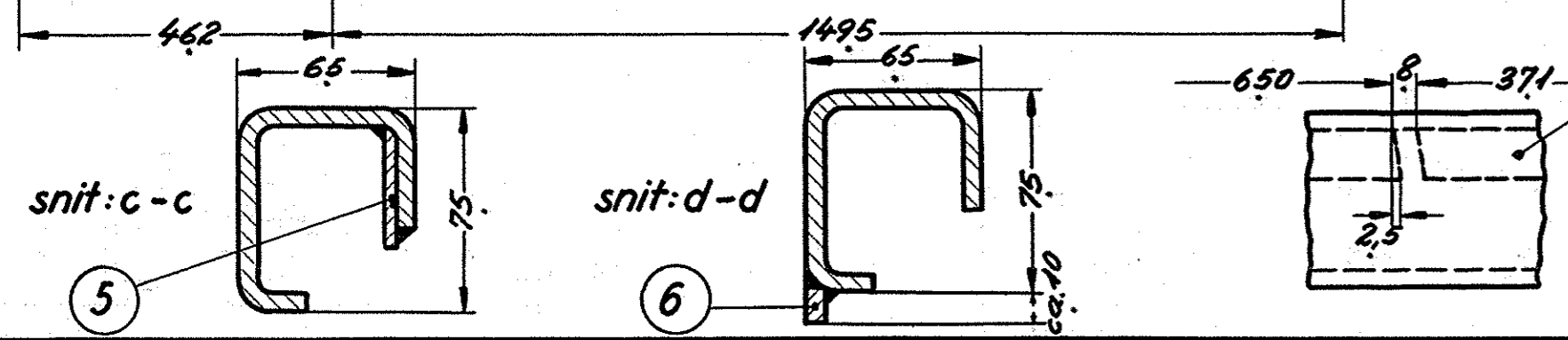


Betegnelse			
forstærkning			
Ant. i alt.	Pos. 5	Mat.	st. 37
Ordn.	Sktl. 9451	Tegn.	301L-6-040

Betegnelse			
døranslag			
Ant. i alt.	Pos. 6	Mat.	st. 37
Ordn.	Sktl. 9451	Tegn.	301L-6-040



Betegnelse			
topramme			
Ant. i alt.	Pos. 3	Mat.	st. 37
Ordn.	Sktl. 9451	Tegn.	301L-6-040



mål i ( ) er svindmål.

2	døranslag	6	st. 37	Hj. 13x6,5x1320	
2	forstærkning	5	" "	Hj. 45x5x3010	
4	topramme	4	" "	Hj. 75x8x9420	
2	" "	2	" "	L= 6030	
2	" "	2	" "	L= 6030	
2	topramme tegn. 301L-29-010/5	1	st. 37	L= 6030	
Skt.	Betegnelse	Pos.	Materiale kvalitet	Model nr. eller materiale betegnelse	Pr. hardig vægtsk.
Tegn. V.M.R. 2/11-51	Rev. 2/11-52	Ordn. IX L	Målestok: 1:2,5-1:5-1:10-1:2,5		
Kalk. E.M. 1-11-52	Norm.	Dato	Indeks:		
Anvendelse			Stykliste nr.		
Diesel-el. 750hk. loko.			9451		
Tegningens benævnelse			Tegningens nummer		
Topramme.			301L-6-040.		

**FRICHS**